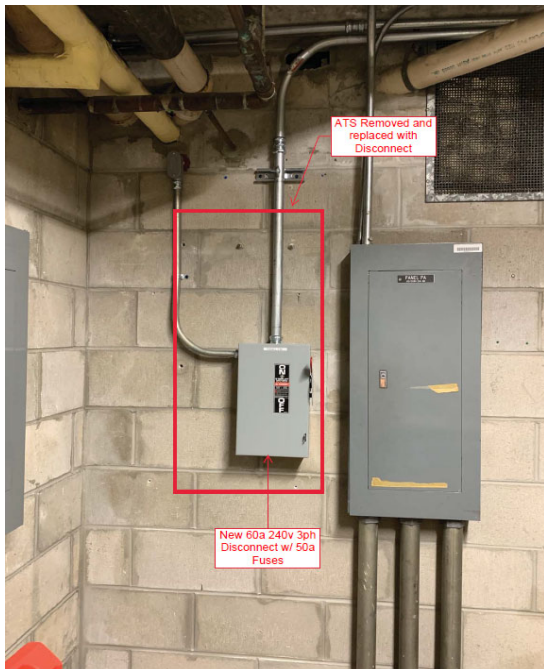
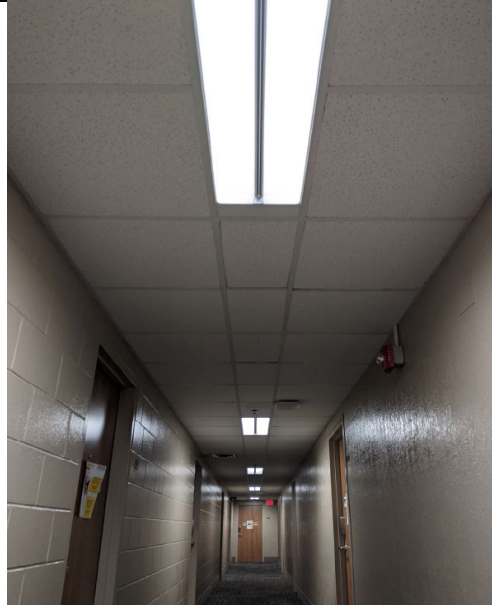




PROJECT INFORMATION	
PROJECT NAME: SEMINOLE HALL REMOVE GENERATOR AND INSTALL LED LIGHT FIXTURES WITH BATTERY BACKUP	DATE COMPLETED: FEBRUARY 17, 2021
PROJECT NUMBER: 19032001	PROJECT MANAGER: CHRISTINA ROGERS
SQUARE FOOTAGE: NA	COST PER SQUARE FOOT: NA
PROJECT DESCRIPTION: REMOVAL OF EXISTING GENERATOR AND ASSOCIATED CONDUITS AND CONDUCTORS. INSTALLATION OF LED LIGHT FIXTURES WITH A BATTERY BACKUP, INCLUDING ELECTRICAL INTERLOCK SWITCH, NEW CONDUITS, COPPER CONDUCTORS TO ELEVATOR CONTROLS, AND CONTROL CONDUIT FROM ELEVATOR MOTOR. PROJECT REQUIRED AN ELEVATOR RECALL PERFORMED BY OTIS. THE LONG DURATION OF THE "START" SCHEDULE WAS DUE TO A COST-SAVING COMPLETE CHANGE IN SCOPE THAT OCCURRED AT THE FRONT END OF THE PROJECT.	

PROJECT IMAGES





PROJECT INFORMATION	
PROJECT NAME: SEMINOLE HALL REMOVE GENERATOR AND INSTALL LED LIGHT FIXTURES	DATE COMPLETED: FEBRUARY 17, 2021
PROJECT NUMBER: 19032001	PROJECT MANAGER: CHRISTINA ROGERS
SQUARE FOOTAGE: NA	COST PER SQUARE FOOT: NA
PROJECT DESCRIPTION: REMOVAL OF EXISTING GENERATOR AND ASSOCIATED CONDUITS AND CONDUCTORS. INSTALLATION OF LED LIGHT FIXTURES WITH A BATTERY BACKUP, INCLUDING ELECTRICAL INTERLOCK SWITCH, NEW CONDUITS, COPPER CONDUCTORS TO ELEVATOR CONTROLS, AND CONTROL CONDUIT FROM ELEVATOR MOTOR. PROJECT REQUIRED AN ELEVATOR RECALL PERFORMED BY OTIS. THE LONG DURATION OF THE "START" SCHEDULE WAS DUE TO A COST-SAVING COMPLETE CHANGE IN SCOPE THAT OCCURRED AT THE FRONT END OF THE PROJECT.	

f

PROJECT COST	
DESIGN COST	\$ -
ARCHITECT / ENGINEER / INTERIOR DESIGN	\$ -
CONSTRUCTION COST	\$ 82,308.00
DIVISION 1 - GENERAL REQUIREMENTS (DUMPSTERS, ETC.)	\$ -
DIVISION 2 - EXISTING CONDITIONS	\$ -
DIVISION 3 - CONCRETE	\$ -
DIVISION 4 - MASONRY	\$ -
DIVISION 5 - METALS	\$ -
DIVISION 6 - WOOD, PLASTICS & COMPOSITES	\$ -
DIVISION 7 - THERMAL & MOISTURE PROTECTION	\$ -
DIVISION 8 - OPENINGS	\$ -
DIVISION 9 - FINISHES	\$ -
DIVISION 10 - SPECIALTIES	\$ -
DIVISION 11 - EQUIPMENT	\$ -
DIVISION 12 - FURNISHINGS	\$ -
DIVISION 13 - SPECIAL CONSTRUCTION	\$ -
DIVISION 14 - CONVEYING EQUIPMENT	\$ -
DIVISION 21 - FIRE SUPPRESSION	\$ -
DIVISION 22 - PLUMBING	\$ -
DIVISION 23 - HVAC	\$ -
DIVISION 26 - ELECTRICAL	\$ 82,308.00
DIVISION 27 - COMMUNICATIONS	\$ -
DIVISION 28 - ELECTRONIC SAFETY & SECURITY	\$ -
DIVISION 31 - EARTHWORK	\$ -
DIVISION 32 - EXTERIOR IMPROVEMENT	\$ -
DIVISION 33 - UTILITIES	\$ -
COMMISSIONING	\$ -
GENERAL LIABILITY	\$ -
GENERAL CONDITIONS (STAFFING, ETC.)	\$ -
CONTRACTOR'S FEE (OVERHEAD & PROFIT)	\$ -
PAYMENT & PERFORMANCE BOND (NOT REQ'D IF UNDER \$100K)	\$ -
INFORMATION TECHNOLOGIES & RESOURCES COST	
UCF IT	\$ -
OFFICE OF INSTRUCTIONAL RESOURCES (OIR)	\$ -
FACILITIES & SAFETY COST	\$ 7,496.14
BUILDING CODE OFFICE	\$ 1,714.00
STATE FIRE MARSHALL	\$ 295.39
FP&C PROFESSIONAL MANAGEMENT SERVICES	\$ 2,472.48
FACILITIES OPERATIONS ALLOWANCE	\$ 3,014.27
CONSTRUCTION CONTINGENCY (10%, REFUNDED IF NOT USED)	\$ -
TOTAL PROJECT COST	\$ 89,804.14

PROJECT TIME		
START	PROJECT SUBMITTED BY CLIENT	4.5 MONTHS
	SPAA, F&S REVIEW	
	PM ASSIGNED	
	PM CONTACTS REQUESTER	
DESIGN	PM DEVELOPS SCOPE	NA
	A/E SELECTED	
	A/E PROPOSAL REVIEW	
	MPP TO CLIENT	
	CLIENT APPROVAL AND FUNDING	
	REQUISITION GENERATED	
	PO ISSUED (NOTICE TO PROCEED)	
	A/E DESIGN	
	WORKSHOPS	
	PERMIT REVIEWS	
BID/PERMIT	S/S PERMIT DRAWINGS REC'D	4 MONTHS
	PERMIT SUBMISSION	
	BUILDING CODE OFFICE REVIEW	
	STATE FIRE MARSHALL REVIEW	
	CONTRACTOR WALK-THROUGH	
	CONTRACTOR BID	
	PM REVIEWS BID	
	AVP F&S APPROVAL OF BID	
	PM PREPARES MPP	
	MPP TO CLIENT	
CONSTRUCTION	CLIENT APPROVAL AND FUNDING	8 MONTHS
	REQUISITION GENERATED	
	PO ISSUED (NOTICE TO PROCEED)	
	CONSTRUCTION STARTS	
	RFIS, SUBMITTALS, DOCUMENTS	
	PROGRESS REVIEWS	
CLOSE-OUT	PAYMENT APPLICATIONS, INVOICES	0.5 MONTHS
	INSPECTIONS	
	CERTIFICATE OF COMPLETION	
	CERTIFICATE OF OCCUPANCY	
	BENEFICIAL OCCUPANCY BY CLIENT	
TOTAL PROJECT TIME - 17 MONTHS		